



PRODUCT BROCHURE



- PCR PLASTIC CONTAINERS
- PLASTIC BOTTLES
- PLASTIC SPOUT POUCHES
- JARS & POTS
- JERRYCANS
- ALUMINIUM CONTAINERS
- DRUMS & KEGS
- BUCKETS & PAILS
- LABORATORY WARE
- DISPENSING SOLUTIONS
- LABEL APPLICATION

LARGE QUANTITIES FROM STOCK | WORLDWIDE SHIPPING | UK DISTRIBUTOR

01663 750 222 | CJK.CO.UK



PREMIUM PACKAGING SOLUTIONS



PROUD TO BE
A TRUSTED
SUPPLIER OF



CONTENTS

- 4 WHO WE ARE
- 5 LABEL APPLICATION SERVICE
- 6 PCR (POST-CONSUMER RECYCLED)
- 9 ECONOMY
- 16 FOOD & DRINK
- 20 SOLVENT RESISTANT
- 21 DROPPER BOTTLES
- 26 POSTAL-FRIENDLY
- 28 AIRLESS
- 29 JARS & POTS
- 35 PAILS & BUCKETS
- 38 DRUMS & KEGS
- 40 JERRYCANS
- 42 LABORATORY WARES
- 44 DISPENSING SOLUTIONS



WHO WE ARE

Hello, we're CJK Packaging Ltd. A family run and owned company with more than 30 years' experience in the packaging industry. As one of the leading suppliers in the UK we're the trusted distributor of Kautex high-quality plastic containers to the UK and Ireland.

Nestled in the breathtaking High Peak of Derbyshire, our location allows us to serve customers in the British region and Europe, with ease.

Operating from our spacious warehouse within our 6-acre site, we hold high stock levels and work with a reliable network of carriers. We pick, pack and ship fast too, and currently hold an annual on-time dispatch rate of 96%.

The products we stock are carefully selected to meet the high standards of our clients and are verified with accompanying ISO and CoC certifications. We also hold our own ISO9001 and ISO14001 accreditations.

HOW WE CAN HELP YOU

- Enjoy no MOQ on your orders with us - you won't find one on any of our products!
- Get your order available from stock, and receive it quickly
- Speak to our friendly team (not automated assistance!) for support or queries

OUR SOLUTIONS

In response to customer demand, our supply chain is made of up local and European manufacturers. We also want to make it easier for consumers to reuse and recycle, and are always seeking new products to expand our PCR Collection.

Look out for these stamps across the brochure



LABEL APPLICATION SERVICE

GET YOUR LABELS APPLIED

Accelerate your supply chain and get your CJK product delivered with your branded labels applied!

Thanks to our state-of-the-art label applicator machines, we can now provide our customers with an in-house labelling service, including batch codes, QR codes and barcodes.

Quick, efficient, and reliable - we select your product from our warehouse, apply your labels on our fully automated machine, and deliver your labelled product straight to you. Easy!

Whether you're looking to reduce manual processes, or redistribute skills and resources - save time, and let CJK apply labels for you.

HOW IT WORKS

- Choose your container and let us know you're interested in getting your labels applied
- Send your pre-printed labels to us
- Wait as CJK applies your labels through automated machines
- Receive your fully labelled items

Looking to improve your packaging? Let's review your needs together. Contact us on sales@cjkc.co.uk



SLOPING SHOULDER 'SWIPE' BOTTLE - 30% PCR

A range of PCR narrow-neck liquid bottles, suitable for many applications.

Material: PCR | Shape: Round | Barrier Bottle: No | Tamper Evident: No
Child Resistant: Caps Available | UN Approved: No | Induction Heat Seal: No



CAPACITY (ML)	MATERIAL	CAP SIZE (MM)	T/E	DIMENSION (MM)	WEIGHT (G)	COLOUR
50	RHDPE	20	NO	32 x 87	7	VARIED
100	RHDPE	20	NO	43 x 112	13	VARIED
250	RHDPE	28	NO	43 x 116	24	VARIED
500	RHDPE	28	NO	32 x 87	32	VARIED
1000	RHDPE	28	NO	43 x 112	46	VARIED

JERRYCAN - 30% PCR

Jerrycans made from recycled plastic. Suitable for many applications.

Material: PCR | Shape: Rectangular | Barrier Bottle: No | Tamper Evident: Yes
Child Resistant: No | UN Approved: No | Induction Heat Seal: No

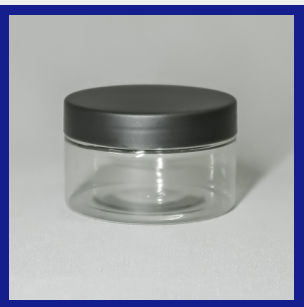
CAPACITY (ML)	MATERIAL	CAP SIZE (MM)	T/E	DIMENSION (MM)	WEIGHT (G)	COLOUR
1000	RHDPE	18	NO	28 x 64	4	VARIED
2000	RHDPE	20	NO	27.5 x 76	5	VARIED
2500	RHDPE	20	NO	36 x 75	7	VARIED
4000	RHDPE	20	NO	36 x 96	8	VARIED
5000	RHDPE	20	NO	34 x 95	8	VARIED



50ML CLEAR SCREW TOP JAR - 50% PCR

Clear PET Screw Top Shallow Plastic Jar made from 50% PCR plastic

Material: PCR 50% | Shape: Round | Tamper Evident: No
Child Resistant: No | UN Approved: No



CAPACITY (ML)	MATERIAL	DIAMETER (MM)	LID (MM)	HEIGHT (MM)	WEIGHT (G)	COLOUR
50	RPET	70	70	40	98	CLEAR / BLACK (LID)

500ML & 1L RHDPE OIL BOTTLE GOLD OR SILVER - 30% PCR

A range of PCR narrow-neck liquid bottles, suitable for many applications.

Material: PCR | Shape: Round | Barrier Bottle: No | Tamper Evident: No
 Child Resistant: Caps Available | UN Approved: No | Induction Heat Seal: No



CAPACITY (ML)	MATERIAL	CAP SIZE (MM)	T/E	DIMENSION (MM)	WEIGHT (G)	COLOUR
500	RHDPE	38	YES	32 x 87	7	SILVER
1000	RHDPE	38	YES	43 x 112	13	BLACK
1000	RHDPE	38	YES	32 x 87	32	GOLD
1000	RHDPE	38	YES	43 x 112	46	SILVER

CLEAR RPET SAUCE BOTTLE - 30% PCR

Sauce bottles made from recycled PET plastic. Suitable for many applications.

Material: PCR | Shape: Curved | Barrier Bottle: Yes | Tamper Evident: No
 Child Resistant: No | UN Approved: No | Induction Heat Seal: Yes

CAPACITY (ML)	MATERIAL	CAP SIZE (MM)	T/E	DIMENSION (MM)	WEIGHT (G)	COLOUR
300	RPET	18	NO	28 x 64	4	CLEAR



10ML RPET DROPPER BOTTLE - 100% PCR

Clear PET Screw Top Shallow Plastic Jar made from 50% PCR plastic

Material: PCR 100% | Shape: Round | Tamper Evident: Yes
 Child Resistant: Yes | UN Approved: No



CAPACITY (ML)	MATERIAL	DIAMETER (MM)	LID (MM)	HEIGHT (MM)	WEIGHT (G)	COLOUR
10	RPET	70	70	40	98	WHITE / BLACK (LID)

500ML BLACK SHINY RPET BOTTLE - 30% PCR

Black shiny rPET bottle in 30% PCR material

Material: PCR | Shape: Round | Barrier Bottle: No | Tamper Evident: No
 Child Resistant: No | UN Approved: No | Induction Heat Seal: No



CAPACITY (ML)	MATERIAL	CAP SIZE (MM)	T/E	DIMENSION (MM)	WEIGHT (G)	COLOUR
500	RPET	20	NO	32 x 87	7	VARIED

500ML CLEAR RPET BOSTON BOTTLE - 30% PCR

Round shoulder bottle in 500ml made from 30% recycled rPET plastic.

Material: PCR | Shape: Round | Barrier Bottle: No | Tamper Evident: No
 Child Resistant: No | UN Approved: No | Induction Heat Seal: No

CAPACITY (ML)	MATERIAL	CAP SIZE (MM)	T/E	DIMENSION (MM)	WEIGHT (G)	COLOUR
500	RPET	18	NO	28 x 64	4	VARIED



PLA COLD CUP - 250ML, 450ML, 568ML - COMPOSTABLE

Clear PLA biodegradable cold cups available in 3 sizes. Commercially compostable in 4 weeks!

Material: PLA | Shape: Round | Tamper Evident: No | Child Resistant: No | UN Approved: No



CAPACITY (ML)	MATERIAL	DIAMETER (MM)	LID (MM)	HEIGHT (MM)	WEIGHT (G)	COLOUR
250	PLA	70	NA	40	98	CLEAR
450	PLA	70	NA	40	98	CLEAR
568	PLA	70	NA	40	98	CLEAR

STAND-UP CLEAR PLASTIC SPOUT POUCH - CLEAR, BLACK, SILVER

Clear plastic stand-up pouch with white funnel spout

Pouch Material: PET, NY, PE | Cap Material: HDPE | Barrier Bottle: No
Tamper Evident: Yes | Child Resistant: No | UN Approved: No



CAPACITY (ML)	MATERIAL	CAP SIZE (MM)	T/E	DIMENSION (CM)	WEIGHT (G)	COLOUR
50	PET, NY, PE	20	YES	30 x 28.5	4	CL
100	PET, NY, PE	20	YES	32.5 x 32	5.4	CL
250	PET, NY, PE	20	YES	10 x 17	6.7	CL, BL, S
500	PET, NY, PE	20	YES	13 x 19	8.7	CL, BL, S
1000	PET, NY, PE	20	YES	17.5 x 26	21.5	CL, BL
2000	PET, NY, PE	20	YES	22 x 32	40.7	CL
3000	PET, NY, PE	20	YES	30 x 28.5	46	CL
2000	PET, NY, PE	20	YES	32.5 x 32	65.8	CL

PET PLASTIC PRESERVE JAR

Clear PET Suction Preserve Jars with an inner seal and clip down suction lid

Material: PET | Shape: Round / Square-round | Tamper Evident: No
Child Resistant: No | UN Approved: No

CAPACITY (ML)	MATERIAL	SHAPE	T/E	DIMENSION (MM)	WEIGHT (G)	COLOUR
250	PET	ROUND	NO	28 x 64	4	C
300	PET	ROUND	NO	27.5 x 76	5	C
400	PET	SQ/ RD	NO	36 x 75	7	C



SLOPING SHOULDER 'SWIPE' BOTTLE

A range of narrow-neck liquid bottles, suitable for many applications.

Material: HDPE | Shape: Round | Barrier Bottle: No | Tamper Evident: Yes/No
Child Resistant: Yes | UN Approved: No | Induction Heat Seal: No



CAPACITY (ML)	MATERIAL	CAP SIZE (MM)	T/E	DIMENSION (MM)	WEIGHT (G)	COLOUR
50	HDPE	20	NO	32 x 87	7	N, W
100	HDPE	20	NO	43 x 112	12	N
150	HDPE	28	NO	53 x 107	7	N
200	HDPE	24	NO	53 x 130	17	N
250	HDPE	24/28	NO	56.7 x 141	19	N, W
400	HDPE	28	NO	66 x 183	28	N
500	HDPE	28	Y / N	68 x 187	31	N, W, BL
750	HDPE	28	NO	83.5 x 193	38	N
1000	HDPE	28	N	83.5 x 242	48	N, W, BL
1000	HDPE	28	Y	83.5 x 242	48	N, W

ROUND SHOULDER 'BOSTON' BOTTLE

A range of narrow-neck liquid bottles, suitable for many applications.

Material: HDPE, LDPE | Shape: Round | Barrier Bottle: No | Tamper Evident: No
Child Resistant: Yes | UN Approved: No | Induction Heat Seal: No



CAPACITY (ML)	MATERIAL	CAP SIZE (MM)	T/E	DIMENSION (MM)	WEIGHT (G)	COLOUR
20	HDPE	18	NO	28 x 64	4	N
30	H/LDPE	20	NO	27.5 x 76	5	N
50	HDPE	20	NO	36 x 75	7	N
60	HDPE	20	NO	36 x 96	8	N, BL
65	HDPE	20	NO	34 x 95	8	BL
100	HDPE	20	NO	36 x 130	12	N
150	HDPE	20	NO	48 x 120	15	N
250	HDPE	20	NO	48 x 173	17	N, W

ROUND SHOULDER PET PLASTIC BOTTLE

Clear, Frosted, Amber or Black PET Round Shoulder Bottles

Material: PET | Shape: Round | Tamper Evident: No | Child Resistant: Yes
UN Approved: No | Induction Heat Seal: No

CAPACITY (ML)	MATERIAL	CAP SIZE (MM)	CRC	HEIGHT (MM)	WEIGHT (G)	COLOUR
30	PET	18 / 20	YES	73 / 79	5 / 7	C
50	PET	20	YES	89 - 95	7 - 8	C
60	PET	20	YES	82 - 104	7.4 - 8	C, A, BL
75	PET	20	YES	84	8	C
100	PET	20	YES	110 - 118	11 - 15	C, FR
120	PET	24	YES	133	13	C
125	PET	20 / 28	YES	100 / 136	14 / 17	C
250	PET	24 / 28	YES	128 - 166	23	C, BL
400	PET	28	YES	192	31	C
500	PET	24 / 28	YES	159 - 208	24 - 37	N, W, BL
1000	PET	28	YES	210 - 240	41 - 45	C



OVAL - OBLONG PET PLASTIC BOTTLE

Material: PET | Shape: Oval / Oblong | Tamper Evident: No | Child Resistant: Yes UN
Approved: No | Induction Heat Seal: No



CAPACITY (ML)	MATERIAL	CAP SIZE (MM)	CRC	HEIGHT (MM)	WEIGHT (G)	COLOUR
50	PET	20	YES	110	15	C
75	PET	20	YES	150	23	C
100	PET	20	YES	170	37	C
250	PET	24	YES	197	41	C
500	PET	28	YES	220	44	C
1000	PET	28	YES	220	45	C

FLAT SHOULDER PET PLASTIC BOTTLE

Clear Round Flat Shoulder Plastic Bottles

Material: PET | Shape: Round, Flat Shoulder | Barrier Bottle: No
 Tamper Evident: No | Child Resistant: Yes | UN Approved: No



CAPACITY (ML)	MATERIAL	CAP SIZE (MM)	T/E	HEIGHT (MM)	WEIGHT (G)	COLOUR
75	PET	20	NO	96	11	C
100	PET	20	NO	110	15	C
250	PET	24	NO	150	23	C
500	PET	28	NO	170	37	C
750	PET	28	NO	197	41	C
1000	PET	28	NO	220	45	C

WHITE PET 'BOSTON' BOTTLE

Tall White PET Round, Flat or Sloped Shoulder Tall Boston Bottles

Material: PET | Shape: Cylindrical | Tamper Evident: No | Child Resistant: No
 UN Approved: No | Induction Heat Seal: No

CAPACITY (ML)	MATERIAL	CAP SIZE (MM)	T/E	HEIGHT (MM)	WEIGHT (G)	COLOUR
60	PET	20	NO	95	8	W
120	PET	24	NO	135	13	W
250	PET	24	NO	180	32	W
500	PET	28	NO	186	35	W
1000	PET	28	NO	238	40	W



BLACK PET 'BOSTON' BOTTLE

Tall Black PET Round, Flat or Sloped Shoulder Boston Bottles

Material: PET | Shape: Cylindrical or Rectangle (30ml) | Tamper Evident: No
 Child Resistant: No UN Approved: No | Induction Heat Seal: No



CAPACITY (ML)	MATERIAL	CAP SIZE (MM)	T/E	HEIGHT (MM)	WEIGHT (G)	COLOUR
30	PET	18	NO	73	5.5	A
60	PET	20	NO	95	8	BL
120	PET	24	NO	135	13	BL
250	PET	24	NO	180	32	BL
500	PET	28	NO	186	35	BL
1000	PET	28	NO	238	40	BL

ROUND SILVER ALUMINIUM BOTTLE

Round Silver Aluminium Bottles available with Pump, Trigger Spray or Silver Screw Closures

Material: Aluminium | Shape: Round | Barrier Bottle: No | Tamper Evident: No
 Child Resistant: No | Food Grade: Yes



CAPACITY (ML)	MATERIAL	CAP SIZE (MM)	CRC	HEIGHT (MM)	WEIGHT (G)	COLOUR
10	ALU	18	NO	58	5	SILVER
15	ALU	18	NO	60	6	SILVER
20	ALU	18	NO	62	6.4	SILVER
50	ALU	24	NO	82	12.5	SILVER
100	ALU	24	NO	110	19.4	SILVER
150	ALU	24	NO	145	27.5	SILVER
250	ALU	24	NO	170	37.3	SILVER

CLEAR PET BOTTLE

Round Clear Ridged PET Plastic White Spirit Bottle with White Child Resistant cap

Material: PET | Shape: Round | Tamper Evident: No | Child Resistant: Yes
 UN Approved: No | Induction Heat Seal: No

CAPACITY (ML)	MATERIAL	CAP SIZE (MM)	T/E	HEIGHT (MM)	WEIGHT (G)	COLOUR
500	PET	28	NO	203	32	C
750	PET	28	NO	245	38	C



WHITE 'SWIRL' HDPE PLASTIC BOTTLE

White Round 'Swirl' HDPE Plastic Bottle available with a choice of caps

Material: HDPE | Shape: Round | Tamper Evident: No | Child Resistant: No
 UN Approved: No | Induction Heat Seal: No



CAPACITY (ML)	MATERIAL	CAP SIZE (MM)	T/E	HEIGHT (MM)	WEIGHT (G)	COLOUR
500	HDPE	28	NO	212	30	W
1000	HDPE	28	NO	265	42	W

NATURAL 'EMPIRE' HDPE PLASTIC BOTTLE

Natural 'Empire' HDPE Plastic Bottle available with coloured tamper evident caps

Material: HDPE | Shape: Round | Barrier Bottle: No | Tamper Evident: Yes
 Child Resistant: No | UN Approved: No



CAPACITY (ML)	MATERIAL	CAP SIZE (MM)	T/E	HEIGHT (MM)	WEIGHT (G)	COLOUR
500	HDPE	32	YES	200	31	N
1000	HDPE	32	YES	252	45	N

Natural LDPE Plastic Bottle

Natural LDPE Plastic Bottle with Coloured T/E Caps

Material: LDPE | Shape: Round | Tamper Evident: Yes | Child Resistant: No
 UN Approved: No | Induction Heat Seal: No

CAPACITY (ML)	MATERIAL	CAP SIZE (MM)	T/E	HEIGHT (MM)	WEIGHT (G)	COLOUR
20	LDPE	18	YES	60	22	N
30	LDPE	20	YES	71	30	N
500	LDPE	38	YES	145	40	N



CLEAR PET HANDWASH BOTTLE

Rectangle Clear PET Plastic Handwash Bottle with a choice of closures

Material: PET | Shape: Rectangle | Tamper Evident: No | Child Resistant: No
 UN Approved: No | Induction Heat Seal: No



CAPACITY (ML)	MATERIAL	CAP SIZE (MM)	T/E	HEIGHT (MM)	WEIGHT (G)	COLOUR
250	PET	28	NO	119	21	C
500	PET	28	NO	145	32	C

50ML CLEAR PET BOTTLE WITH DISC TOP

Clear PET Plastic Bottle Complete Unit with White Disc Top

Material: PET | Shape: Round | Barrier Bottle: No | Tamper Evident: No
Child Resistant: No | UN Approved: No



CAPACITY (ML)	MATERIAL	CAP SIZE (MM)	T/E	HEIGHT (MM)	WEIGHT (G)	COLOUR
50	PET	20	NO	89	15	C

125ML CLEAR PET BOTTLE WITH WHITE PUMP CAP

Clear Round PET Bottle with White Pump Cap

Material: PET | Shape: Round | Tamper Evident: No | Child Resistant: No
UN Approved: No | Induction Heat Seal: No

CAPACITY (ML)	MATERIAL	CAP SIZE (MM)	T/E	HEIGHT (MM)	WEIGHT (G)	COLOUR
125	PET	20	NO	101	21	N



100ML NATURAL RECTANGULAR HDPE PLASTIC BOTTLE

Natural Rectangular HDPE Plastic Bottle Available with a range of closures

Material: HDPE | Shape: Rectangle | Child Resistant: Options Available
Tamper Evident: No | UN Approved: No | Induction Heat Seal: No



CAPACITY (ML)	MATERIAL	CAP SIZE (MM)	T/E	HEIGHT (MM)	WEIGHT (G)	COLOUR
100	HDPE	20	NO	112	17	N

500ML SHAPED OIL BOTTLE - METALLIC SILVER OR GOLD

500ml shaped oil bottle in a choice of metallic silver or gold. Visi-line and

Material: HDPE | Shape: Rectangle | Tamper Evident: Yes
 Child Resistant: No | UN Approved: Yes / No



CAPACITY (ML)	MATERIAL	CAP SIZE (MM)	T/E	HEIGHT (MM)	WEIGHT (G)	COLOUR
500	HDPE	38	YES	65	12	GOLD
500	HDPE	38	YES	65	12	GOLD

WIDE NECK ROUND BOTTLES WITH 38MM TAMPER EVIDENT NECK

Natural Wide Neck Round HDPE Plastic Bottles with 38mm Tamper Evident Neck.

Material: HDPE | Shape: Round | Tamper Evident: Yes | Child Resistant: No UN
 Approved: No | Induction Heat Seal: No

CAPACITY (ML)	MATERIAL	HEIGHT	T/E	BODY DIAMETER	WEIGHT	COLOUR
75	HDPE	87	YES	47	12	N
125	HDPE	88	YES	56	14	N
250	HDPE	105	YES	72	24	N
500	HDPE	88	YES	56	14	N
1000	HDPE	105	YES	72	24	N



1 LITRE RECTANGULAR WHITE OIL BOTTLE

White Rectangular HDPE Plastic Bottle in 1 Litre, with wide 38mm neck

Material: HDPE | Shape: Rectangle | Child Resistant: Options Available
 Tamper Evident: Yes | UN Approved: No | Induction Heat Seal: No

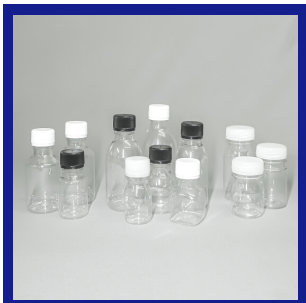


CAPACITY (ML)	MATERIAL	CAP SIZE (MM)	T/E	HEIGHT (MM)	WEIGHT (G)	COLOUR
1000	HDPE	38	YES	112	17	W

PET PLASTIC SHOT BOTTLE

PET Plastic Shot bottles in 3 styles; Shot (SH), Wide Neck (WN) and Swipe (S).

Material: PET | Shape: Round, Square (50ml) | Tamper Evident: Yes
 Child Resistant: No | UN Approved: No



CAPACITY (ML)	STYLE	MATERIAL	CAP SIZE (MM)	T/E	HEIGHT (MM)	WEIGHT (G)	COLOUR
30	SH	PET	28	YES	65	12	C
50	SQ., S	PET	28	YES	65	12	C
60	SH, WN	PET	28, 38	YES	73	13	C
80	WN	PET	28, 38	YES	98	17	C
100	SH, S	PET	28	YES	105	17	C
120	SH, S	PET	28, 38	YES	110	18	C
125	SH, S	PET	28	YES	108	18	C
200	SH	PET	28	YES	110	18	C



SQUARE PET PLASTIC JUICE BOTTLE

Square Clear PET Plastic Juice Bottle with Natural T/E cap

Material: PET | Shape: Square | Tamper Evident: Yes | Child Resistant: No
 UN Approved: No | Induction Heat Seal: No

CAPACITY (ML)	MATERIAL	CAP SIZE (MM)	T/E	HEIGHT (MM)	WEIGHT (G)	COLOUR
250	PET	34	YES	134	21	C
300	PET	34	YES	155	25	C
500	PET	34	YES	195	26	C
1000	PET	34	YES	247	38	C



CLEAR 'NECTAR' PLASTIC JUICE BOTTLE

Clear 'NECTAR' PET Plastic Juice Bottle with Natural T/E cap

Material: PET | Shape: Round | Tamper Evident: Yes | Child Resistant: No
 UN Approved: No | Induction Heat Seal: No



CAPACITY (ML)	MATERIAL	CAP SIZE (MM)	T/E	HEIGHT (MM)	WEIGHT (G)	COLOUR
250	PET	38	YES	150	18	C
330	PET	38	YES	167	25	C
500	PET	38	YES	190	30	C
750	PET	38	YES	219	37	C
1000	PET	38	YES	255	37	C

SQUARE 'FRESH' PET JUICE BOTTLE

Square 'FRESH' Clear PET Juice Bottle with Natural T/E cap

Material: PET | Shape: Square/ Round | Barrier Bottle: No | Tamper Evident: Yes
Child Resistant: No | UN Approved: No



CAPACITY (ML)	MATERIAL	CAP SIZE (MM)	T/E	HEIGHT (MM)	WEIGHT (G)	COLOUR
250	PET	38	YES	137	21	C
330	PET	38	YES	169	23	C
1000	PET	38	YES	242	39	C

ROUND PLASTIC JUICE BOTTLE

Round Clear PET Plastic Juice Bottle with Natural or Colour T/E Caps

Material: PET | Shape: Round | Tamper Evident: Yes | Child Resistant: No
UN Approved: No | Induction Heat Seal: No

CAPACITY (ML)	MATERIAL	CAP SIZE (MM)	T/E	HEIGHT (MM)	WEIGHT (G)	COLOUR
250	PET	34	YES	146	21	C
330	PET	34	YES	161	22	C
500	PET	34	YES	190	29	C
1000	PET	34	YES	240	39	C



NATURAL 'LIFESTYLE' JUICE BOTTLE

Natural 'Lifestyle' HDPE Juice Bottle with Coloured T/E Caps

Material: HDPE | Shape: Round | Tamper Evident: Yes | Child Resistant: No
UN Approved: No | Induction Heat Seal: No



CAPACITY (ML)	MATERIAL	CAP SIZE (MM)	T/E	HEIGHT (MM)	WEIGHT (G)	COLOUR
250	HDPE	32	YES	148	22	N
500	HDPE	32	YES	195	30	N
1000	HDPE	32	YES	240	40	N

NATURAL PLASTIC JUICE BOTTLE

Natural HDPE Juice Bottle with Coloured or Natural T/E cap

Material: HDPE | Shape: Round | Barrier Bottle: No | Tamper Evident: Yes
 Child Resistant: No | UN Approved: No



CAPACITY (ML)	MATERIAL	CAP SIZE (MM)	T/E	HEIGHT (MM)	WEIGHT (G)	COLOUR
250	HDPE	32	YES	144	15	N
500	HDPE	32	YES	182	22	N
1000	HDPE	32	YES	219	44	N

1L SQUARE ROUND CLEAR PET BOTTLE

Square Round Clear PET Bottle available with Spray, Pump, Screw-top Hinged and Flip-top Closures

Material: PET | Shape: Square Round | Tamper Evident: No | Child Resistant: No
 UN Approved: No | Induction Heat Seal: No

CAPACITY (ML)	MATERIAL	CAP SIZE (MM)	T/E	HEIGHT (MM)	WEIGHT (G)	COLOUR
1000	PET	28	NO	245	40	C



1L CLEAR PET TALL BOTTLE

Tall Ridged Clear PET Long-Neck Bottle with White Pump or Tamper Evident Cap

Material: PET | Shape: Round | Tamper Evident: Yes | Child Resistant: No
 UN Approved: No | Induction Heat Seal: No



CAPACITY (ML)	MATERIAL	CAP SIZE (MM)	T/E	HEIGHT (MM)	WEIGHT (G)	COLOUR
1000	PET	28	YES	280	60	C

HDPE SAUCE BOTTLE

Natural HDPE Sauce Bottles with IHS Flip-top Caps

Natural Side Handle HDPE Sauce Bottle with Tamper Evident, Pump, Tap or Screw Cap

Material: HDPE | Shape: Round / Side Handle | Tamper Evident: Yes/No

Child Resistant: No | UN Approved: No | Induction Heat Seal: Yes



CAPACITY (ML)	MATERIAL	CAP SIZE (MM)	T/E	HEIGHT (MM)	WEIGHT (G)	COLOUR
500	HDPE	31 / 38	NO	175	29	N
1000	HDPE	31 / 38	NO	229	41	N
4000	HDPE	38	YES	242	39	N

CLEAR PET SAUCE BOTTLE

Clear PET Plastic Juice Bottle with Black or White IHS Wad Flip-topCaps

Material: PET | Shape: Sauce | Tamper Evident: No | Child Resistant: No

UN Approved: No | Induction Heat Seal: Yes

CAPACITY (ML)	MATERIAL	CAP SIZE (MM)	T/E	HEIGHT (MM)	WEIGHT (G)	COLOUR
300	PET	34	YES	146	21	C
520	PET	34	YES	161	22	C



1L CURVED SAUCE BOTTLE

1 Litre Natural HDPE saucee bottle with curved edges.

Material: HDPE | Shape: Curved | Tamper Evident: No | Child Resistant: No

UN Approved: No | Induction Heat Seal: Yes



CAPACITY (ML)	MATERIAL	CAP SIZE (MM)	T/E	HEIGHT (MM)	WEIGHT (G)	COLOUR
1000	HDPE	38	NO	245	40	N

FLUORINATED 'SWIPE' PLASTIC BOTTLE

Fluorinated 'Swipe' HDPE Plastic Bottle with Tamper Evident and Child-Resistant closures

Material: HDPE | Shape: Round | Barrier Bottle: Yes
 Tamper Evident: Yes / No Child Resistant: Yes / No | UN Approved: No



CAPACITY (ML)	MATERIAL	CAP SIZE (MM)	T/E	HEIGHT (MM)	WEIGHT (G)	COLOUR
50	HDPE	20	NO	87	7	N
100	HDPE	20	NO	112	12	N
250	HDPE	28	NO	141	19	N
500	HDPE	28	NO	187	31	N
1000	HDPE	28	NO	242	48	N
1000	HDPE	28	YES	242	48	N

UN APPROVED FLUORINATED PLASTIC BOTTLE

Round White or Natural HDPE Plastic Fluorinated bottle with T/E Closure

Material: HDPE | Shape: Round | Tamper Evident: Yes | Child Resistant: No
 UN Approved: Yes | Induction Heat Seal: No

CAPACITY (ML)	MATERIAL	CAP SIZE (MM)	T/E	HEIGHT (MM)	WEIGHT (G)	COLOUR
500	HDPE	42	YES	135	35	W
1000	HDPE	42	YES	223	80	N
1000	HDPE	42	YES	223	80	W



VARIOPACK DUAL COEX BOTTLE

Natural Variopack Coex/PE Juice Bottle with Coloured T/E Caps

Material: CoEx/PE | Shape: Round | Tamper Evident: Yes | Child Resistant: No
 Induction Heat Seal: Yes | Barrier Bottle: Yes



CAPACITY (ML)	MATERIAL	CAP SIZE (MM)	T/E	HEIGHT (MM)	WEIGHT (G)	COLOUR
250	COEX/PE	50	YES	131.3	30	N
250	COEX/PE	50	YES	131.3	30	W
500	COEX/PE	50	YES	187	45	W
1000	COEX/PE	50	YES	234	73	W
1000	COEX/PE	50	YES	187	45	N

CLEAR ROUND CRC PET DROPPER BOTTLE

Clear PET Plastic Dropper Bottle with Coloured CRC Screw Dropper Cap with Thin Tips

Material: PET | Shape: Round | Tamper Evident: No
 Child Resistant: Yes | UN Approved: No



CAPACITY (ML)	MATERIAL	CAP SIZE (MM)	T/E	HEIGHT (MM)	WEIGHT (G)	COLOUR
10	PET	14	NO	54	3	C
15	PET	14	NO	65	4	C
20	PET	14	NO	67	4	C
30	PET	14	NO	67	5	C

SHRINK BANDS & WARNING TRIANGLES AVAILABLE

NATURAL LDPE CRC DROPPER BOTTLE - THIN PLUG

Natural LDPE Dropper Bottle with Coloured CRC Screw Dropper Cap with choice of Thin or Stubby Plug

Material: LDPE | Shape: Round | Tamper Evident: No | Child Resistant: Yes
 UN Approved: No | Induction Heat Seal: No

CAPACITY (ML)	MATERIAL	CAP SIZE (MM)	T/E	HEIGHT (MM)	WEIGHT (G)	COLOUR
3	LDPE	14	NO	30	2	N
10	LDPE	14	NO	57	3	N
15	LDPE	14	NO	64	4	N
20	LDPE	14	NO	67	5	N
30	LDPE	14	NO	68	5	N
30 (PEN)	LDPE	14	NO	116	8	N
50	LDPE	14	NO	77	8	N
100	LDPE	14	NO	115	12	N



SHRINK BANDS & WARNING TRIANGLES AVAILABLE

SQUARE PET DROPPER BOTTLE WITH THIN NEEDLE TIP

Square PET Dropper Bottle with Coloured CRC Screw Dropper Cap and Thin Needle Plug

Material: PET | Shape: Round | Tamper Evident: No | Child Resistant: Yes UN
 Approved: No | Induction Heat Seal: No



CAPACITY (ML)	MATERIAL	CAP SIZE (MM)	T/E	HEIGHT (MM)	WEIGHT (G)	COLOUR
10	PET	14	NO	52	3	C

COLOURED PET DROPPER BOTTLE

Coloured Liquid Dropper Bottles PET Plastic – Thin Needle Tip – CRC with moulded Tactile Warning Triangle on top

Material: PET | Shape: Round | Tamper Evident: No | Child Resistant: Yes
UN Approved: No



CAPACITY (ML)	MATERIAL	CAP SIZE (MM)	T/E	HEIGHT (MM)	WEIGHT (G)	COLOUR
10	PET	14	NO	54	3	BLACK
10	PET	14	NO	54	3	BROWN
10	PET	14	NO	54	3	GREEN

TPD COMPLIANT PET T/E CRC DROPPER BOTTLE

TPD Compliant PET Dropper Bottle – Tamper Evident & Child Resistant Cap is ISO 13127. Bottle & Cap are FDA Certified

Material: PET | Shape: Round | Tamper Evident: Yes | Child Resistant: Yes
FDA Certified: Yes

CAPACITY (ML)	MATERIAL	CAP SIZE (MM)	T/E	HEIGHT (MM)	WEIGHT (G)	COLOUR
5	PET	14	YES	54	3	C
10	PET	14	YES	60	6	C



10ML CRYSTAL CLEAR PET DROPPER BOTTLE - TIP INSERTED

Crystal' Clear PET Bottle – Tip Inserted Tamper Evident and Child Resistant Dropper cap

Material: PET | Shape: Round | Tamper Evident: Yes | Child Resistant: Yes UN
Approved: No | Induction Heat Seal: No



CAPACITY (ML)	MATERIAL	CAP SIZE (MM)	T/E	HEIGHT (MM)	WEIGHT (G)	COLOUR
10	PET	14	YES	150	18	C

SHRINK BANDS & WARNING TRIANGLES AVAILABLE

CRC & T/E PET DROPPER BOTTLE

PET bottles complete with Thin Tips and coloured CRC & Tamper Evident Closures

Material: PET | Shape: Round | Tamper Evident: Yes | Child Resistant: Yes UN Approved: No | Induction Heat Seal: No



CAPACITY (ML)	MATERIAL	CAP SIZE (MM)	T/E	HEIGHT (MM)	WEIGHT (G)	COLOUR
5	PET	14	YES	42	2	C
10	PET	14	YES	54	3	C
10	PET	14	YES	54	3	BL
15	PET	14	YES	63	4	C
20	PET	14	YES	68	4	C
30	PET	14	YES	67	14	C

SHRINK BANDS & WARNING TRIANGLES AVAILABLE

'INiTiAL' Short Fill T/E PET Dropper Bottle - Hinged Flip Tip

Short Fill Tamper Evident Clear or Black Tinted PET Dropper Bottle with Hinged Flip Tip

Material: PET | Shape: Round | Tamper Evident: Yes | Child Resistant: Caps Available | UN Approved: No | Induction Heat Seal: No

CAPACITY (ML)	MATERIAL	CAP SIZE (MM)	T/E	HEIGHT (MM)	WEIGHT (G)	COLOUR
30	PET	24	YES	65.1	5	BLACK
30	PET	24	YES	65.1	5	CLEAR
60	PET	24	YES	109	8	BLACK
60	PET	24	YES	109	8	CLEAR
75	PET	24	YES	112	10.2	CLEAR
100	PET	35	YES	101	14.4	BLACK
100	PET	35	YES	101	14.4	CLEAR
120	PET	35	YES	116.5	15	BLACK
120	PET	35	YES	116.5	15	CLEAR



Find our **100% PCR** Dropper Bottle
on page 6

SHORT FILL PET BOSTON DROPPER BOTTLE

Clear PET Round Shoulder Boston Bottles with various dropper caps available

Material: PET | Shape: Round | Tamper Evident: No
Child Resistant: Caps Available | UN Approved: No



CAPACITY (ML)	MATERIAL	CAP SIZE (MM)	T/E	HEIGHT (MM)	WEIGHT (G)	COLOUR
30	PET	20	NO	79.5	6	C
60	PET	20	NO	103.3	8	C
100	PET	20	NO	119	13	C
120	PET	24	NO	134.5	14	C

SHORT FILL PET T/E BOTTLE WITH STANDARD OR FLIP OUT TIP

Short Fill Dropper Bottles with Thin Dripping Tips – Child Proof & Tamper Evident Closures

Material: PET | Shape: Round | Tamper Evident: Yes | Child Resistant: Caps Available | UN Approved: No | Induction Heat Seal: No

CAPACITY (ML)	MATERIAL	CAP SIZE (MM)	T/E	HEIGHT (MM)	WEIGHT (G)	COLOUR
30	PET	24	YES	65.1	5	C, B
60	PET	24	YES	109	8/9	B, C
75	PET	24	YES	118.5	8	C
100	PET	35	YES	101	14.4	B, C
120	PET	35	YES	116.5	15	B, C
200	PET	46	YES	117	22	C



Need some advice?

Give us a call for more information -
01663 750 222

GLASS DROPPER BOTTLE

Clear or Black Tinted Glass Dropper Bottle with a Choice of Closures

Material: Glass | Shape: Round | Tamper Evident: No
 Child Resistant: No | UN Approved: No



CAPACITY (ML)	MATERIAL	CAP SIZE (MM)	T/E	HEIGHT (MM)	WEIGHT (G)	COLOUR
10	GLASS	18	NO	58	25	C
10	GLASS	18	NO	58	25	BL

10ML LDPE DROPPER BOTTLE

Natural LDPE Plastic Dropper Bottle with a Choice of Coloured Dome or Flat Monochrome Caps

Material: LDPE | Shape: Round | Tamper Evident: Yes | Child Resistant: Caps Available
 UN Approved: No | Induction Heat Seal: No

CAPACITY (ML)	MATERIAL	CAP SIZE (MM)	T/E	HEIGHT (MM)	WEIGHT (G)	COLOUR
10	PET	14	YES	61.3	3	N

SHRINK BANDS & WARNING TRIANGLES AVAILABLE



OVAL PET DROPPER BOTTLE

Clear PET Oval Dropper Bottle with Thin Needle Tip and CRC Tactile Triangle Moulded Cap

Material: PET | Shape: Round | Tamper Evident: No | Child Resistant: Yes UN
 Approved: No | Induction Heat Seal: No



CAPACITY (ML)	MATERIAL	CAP SIZE (MM)	T/E	HEIGHT (MM)	WEIGHT (G)	COLOUR
30	PET	14	NO	74	3	C

INITIAL HDPE POSTAL BOTTLE

Natural Rectangular Tip-less Tamper Evident HDPE Postal Bottle with Flat or Domed Dropper Cap

Material: HDPE | Shape: Rectangle | Tamper Evident: Yes
Child Resistant: No | UN Approved: No



CAPACITY (ML)	MATERIAL	CAP SIZE (MM)	T/E	HEIGHT (MM)	WEIGHT (G)	COLOUR
30	HDPE	14	YES	67	6.1	N
60	HDPE	14	YES	92	8.7	N
100	HDPE	14	YES	119	13.3	N
120	HDPE	14	YES	142	16.3	N

PETG POSTAL DROPPER BOTTLE

Clear or Black Tint PET Dropper Bottle with Domed or Tipless Flat Screw Closures

Material: PETG | Shape: Rectangle | Tamper Evident: Yes | Child Resistant: Yes
UN Approved: No | Induction Heat Seal: No

CAPACITY (ML)	MATERIAL	CAP SIZE (MM)	T/E	HEIGHT (MM)	WEIGHT (G)	COLOUR
60	PETG	14	YES	92	15	C
60	PETG	14	YES	92	15	BL



150ML WHITE HDPE POSTAL PACK

White rectangle HDPE Postal Pack with Tamper Evident Sticky Wad Seal Lid

Material: HDPE | Shape: Rectangle | Tamper Evident: Yes | Child Resistant: No
UN Approved: No | Induction Heat Seal: No



CAPACITY (ML)	MATERIAL	CAP SIZE (MM)	T/E	HEIGHT (MM)	WEIGHT (G)	COLOUR
150	HDPE	30 x 18	YES	132	27	W

'SEALED FOR YOUR PROTECTION' STICKERS AVAILABLE

WHITE HDPE POSTAL-FRIENDLY CONTAINER

White HDPE Postal-Friendly Container - Induction Heat Seal Required

Material: HDPE | Shape: Rectangle | Tamper Evident: No
 Child Resistant: No | UN Approved: No | Induction Heat Seal: Yes



CAPACITY (ML)	MATERIAL	CAP SIZE (MM)	T/E	HEIGHT (MM)	WEIGHT (G)	COLOUR
150	HDPE	80 x 22	NO	110	15	W
320	HDPE	102 x 22	NO	182	31	W

'SEALED FOR YOUR PROTECTION' STICKERS AVAILABLE

30ML AMBER RECTANGLE PET BOTTLE

Rectangle Amber PET Plastic Bottle with Screw Top Closures - CRC Available

Material: PET | Shape: Rectangle | Tamper Evident: Yes | Child Resistant: Caps Available | UN Approved: No | Induction Heat Seal: No

CAPACITY (ML)	MATERIAL	CAP SIZE (MM)	T/E	HEIGHT (MM)	WEIGHT (G)	COLOUR
30	PET	18	YES	73	5.5	A



RECTANGLE HDPE POSTAL PACK

Flat Rectangle HDPE Postal Container with Screw Closure and A Range of Closures

Material: HDPE | Shape: Rectangle | Tamper Evident: No | Child Resistant: Yes UN Approved: No | Induction Heat Seal: No



CAPACITY (ML)	MATERIAL	CAP SIZE (MM)	T/E	HEIGHT (MM)	WEIGHT (G)	COLOUR
100	HDPE	18	NO	119	13	NTRL
100	HDPE	18	NO	119	13	WHITE
100	HDPE	18	NO	119	13	BLACK
250	HDPE	18	NO	171	35	NTRL
300	HDPE	18	NO	197	36	NTRL

CLEAR ROUND AIRLESS BOTTLE

Round Clear Airless Bottle in Acrylonitrile Styrene and Screw On Pump and Lid

Material: AS | Shape: Cylindrical | Tamper Evident: No
 Child Resistant: No | UN Approved: No | Induction Heat Seal: No



CAPACITY (ML)	MATERIAL	DIAMETER (MM)	T/E	HEIGHT (MM)	WEIGHT (G)	COLOUR
5	AS	19	NO	75	9.6	C
8	AS	19	NO	95	11	C
12	AS	19	NO	111	12.3	C
15	AS	19	NO	130	13.7	C

ROUND CLEAR AIRLESS BOTTLE WITH SILVER SCREW ON PUMP

Round Clear Airless Bottle – Complete with Silver Pump (SCREW ON)

Material: AS Body, ABS Fittings | Shape: Cylindrical | Tamper Evident: No | Child Resistant: No | UN Approved: No | Induction Heat Seal: No

CAPACITY (ML)	MATERIAL	DIAMETER (MM)	T/E	HEIGHT (MM)	WEIGHT (G)	COLOUR
15	AS/AB	26.4	NO	108	30	C/S
20	AS/AB	26.4	NO	120	33	C/S
30	AS/AB	26.4	NO	152	40	C/S



ROUND WHITE AIRLESS BOTTLE

Round White PP Plastic Airless Bottle with Push On Pump Cap and Lid. Valve and Piston Mechanism for Product Dispense.

Material: HDPE | Shape: Rectangle | Tamper Evident: No | Child Resistant: Yes UN Approved: No | Induction Heat Seal: No



CAPACITY (ML)	MATERIAL	DIAMETER (MM)	T/E	HEIGHT (MM)	WEIGHT (G)	COLOUR
15	PP	33.2	NO	93.5	21.5	WHITE
30	PP	33.2	NO	110	24	WHITE

SHALLOW 'EDGE' ROUND SCREW TOP PP PLASTIC JAR

Shallow 'EDGE' Round Screw Top PP Plastic Jar in Black or White

Material: PP | Shape: Round | Tamper Evident: No | Child Resistant: No
UN Approved: No



CAPACITY (GRAM)	MATERIAL	LID SIZE (MM)	T/E	HEIGHT (MM)	WEIGHT (G)	COLOUR
200	PP	90	NO	45	34	WHITE
200	PP	90	NO	45	34	BLACK
350	PP	90	NO	70	44	WHITE
350	PP	90	NO	70	44	BLACK
500	PP	90	NO	95	48	WHITE
500	PP	90	NO	95	48	BLACK

BLACK PET PLASTIC SCREW TOP JAR

Black PET Plastic Shallow Screw Top Jar Available with Shive

Material: PET | Shape: Round | Tamper Evident: No | Child Resistant: No
UN Approved: No

CAPACITY (GRAM)	MATERIAL	LID SIZE (MM)	T/E	HEIGHT (MM)	WEIGHT (G)	COLOUR
250	PET	70	NO	75	24	BLACK
250	PET	89	NO	58	43	BLACK



CLEAR PET PLASTIC ROUND SCREW TOP JAR

Clear PET Plastic Round Screw Top Jar with Black White or Silver Lids - Some with Shive

Material: PET | Shape: Round | Tamper Evident: No | Child Resistant: No UN
Approved: No | Induction Heat Seal: No

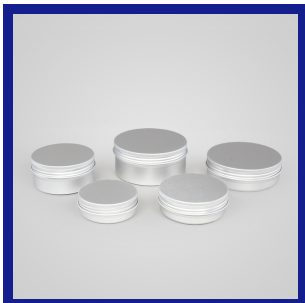


CAPACITY (GRAM)	MATERIAL	LID SIZE (MM)	T/E	HEIGHT (MM)	WEIGHT (G)	COLOUR
50	PET	70	NO	25	15	C
100	PET	70	NO	40	16	C
150	PET	70	NO	50	16	C
200	PET	70	NO	65	21	C
200	PET	89	NO	49	28	C
250	PET	70	NO	75	20	C
300	PET	89	NO	65	30	C
400	PET	89	NO	80	40	C

SILVER WIDE NECK ALUMINIUM JAR

Silver Aluminium Jar with Wide Neck and Screw Top Lid with EPE Liner

Material: Aluminium | Shape: Round | Tamper Evident: No
 Child Resistant: No | UN Approved: No



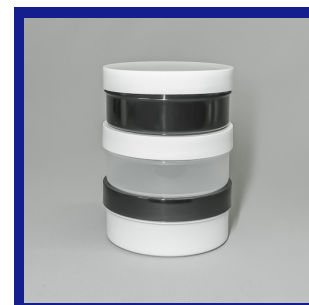
CAPACITY (GRAM)	MATERIAL	LID SIZE (MM)	T/E	HEIGHT (MM)	WEIGHT (G)	COLOUR
50	ALU	58	NO	22	10.2	SILVER
60	ALU	68	NO	25	14.6	SILVER
100	ALU	83	NO	28	19.9	SILVER
120	ALU	92	NO	26	21.8	SILVER
150	ALU	83	NO	38	22.4	SILVER

250ML SQUAT SHALLOW PP PLASTIC BODY BUTTER JAR

Natural or White Round Shallow Polypropylene Plastic Body Butter Jars

Material: PP | Shape: Round | Tamper Evident: No | Child Resistant: No
 UN Approved: No | Induction Heat Seal: No

CAPACITY (GRAM)	MATERIAL	LID SIZE (MM)	T/E	HEIGHT (MM)	WEIGHT (G)	COLOUR
250	PP	105	NO	43	24	W
250	PP	105	NO	43	24	N
250	PP	105	NO	43	24	B



NATURAL PP PLASTIC SCREW TOP JAR WITH INNER SEAL

Natural 'Opaque' Mushroom-Shaped Polypropylene Plastic Screw Top Jar with Inner Seal

Material: PP | Shape: Round | Tamper Evident: No | Child Resistant: No
 UN Approved: No | Induction Heat Seal: No



CAPACITY (GRAM)	MATERIAL	DIAMETER (MM)	T/E	HEIGHT (MM)	WEIGHT (G)	COLOUR
5	PP	32	NO	23	7.8	N
10	PP	40	NO	27	12	N
20	PP	47	NO	37	17.7	N
50	PP	56	NO	47	28.5	N

WHITE DOUBLE-LAYER SCREW TOP PP PLASTIC JAR WITH INNER LINER

White Double-Layer Screw Top PP Plastic Jar with Inner Liner

Material: PP | Shape: Round | Tamper Evident: No | Child Resistant: No
UN Approved: No



CAPACITY (GRAM)	MATERIAL	DIAMETER (MM)	T/E	HEIGHT (MM)	WEIGHT (G)	COLOUR
30	PP	50.5	NO	38.6	20	WHITE
50	PP	58	NO	46	28	WHITE
60	PP	69	NO	52	38	WHITE
100	PP	77	NO	67	61	WHITE
125	PP	77	NO	67	61	WHITE
200	PP	78	NO	67	65	WHITE
150	PP	79	NO	68	76	WHITE

CLEAR POLYSTYRENE JAR WITH WHITE POLYPROPYLENE LID

Clear Small Quantity Polystyrene Jars with White PP Lids

Material: Polystyrene - Jar / Polypropylene - Lid | Shape: Round | Tamper Evident: No | Child Resistant: No

CAPACITY (GRAM)	MATERIAL	DIAMETER (MM)	T/E	HEIGHT (MM)	WEIGHT (G)	COLOUR
3	PS / PP	30	NO	16.8	3.8	C
5	PS / PP	30	NO	22	4.7	C
10	PS / PP	38.8	NO	23	8.4	C
20	PS / PP	38.8	NO	25	13	C
25	PS / PP	44	NO	32	15	C
30	PS / PP	44	NO	36	17.6	C



CLEAR TAMPER EVIDENT SCREW TOP PET PLASTIC JAR

Clear Round Tamper Evident Screw Top PET Plastic Jar

Material: PET | Shape: Round | Tamper Evident: Yes | Child Resistant: No UN Approved: No | Induction Heat Seal: No



CAPACITY (GRAM)	MATERIAL	DIAMETER (MM)	T/E	HEIGHT (MM)	WEIGHT (G)	COLOUR
60	PET	50	YES	54	13.4	C
120	PET	50	YES	88	17	C

30ML Natural HDPE Plastic Screw Top Jar

Natural HDPE Plastic Screw Top Jar with Black Lid

Material: HDPE | Shape: Round | Tamper Evident: No
 Child Resistant: No | UN Approved: No



CAPACITY (ML)	MATERIAL	CAP SIZE (MM)	T/E	HEIGHT (MM)	WEIGHT (G)	COLOUR
30	HDPE	28	NO	55	6	N

300ML CLEAR PP JAR WITH WHITE SCREW TOP LID

Clear PP Jar with White Screw Top Lid

Material: PP | Shape: Round | Tamper Evident: No | Child Resistant: No
 UN Approved: No | Induction Heat Seal: No

CAPACITY (ML)	MATERIAL	CAP SIZE (MM)	T/E	HEIGHT (MM)	WEIGHT (G)	COLOUR
300	PP	80	NO	74	160	C



NATURAL ROUND PP PLASTIC NAIL PUMP DISPENSER

Natural Round PP Plastic Dispenser with Wide Mouth and Screw On One-Touch Pump

Material: PP | Shape: Round | Tamper Evident: No | Child Resistant: No
 UN Approved: No | Induction Heat Seal: No



CAPACITY (ML)	MATERIAL	CAP SIZE (MM)	T/E	HEIGHT (MM)	WEIGHT (G)	COLOUR
100	PP	49	NO	88	30	N

MEDIPAC WHITE HDPE PLASTIC POT

Medipac White HDPE Plastic Pots with White Lined Screw Top or Child Resistant Caps

Material: HDPE | Shape: Round | Tamper Evident: No
 Child Resistant: Yes | UN Approved: No



CAPACITY (ML)	MATERIAL	CAP SIZE (MM)	T/E	HEIGHT (MM)	WEIGHT (G)	COLOUR
90	HDPE	28	NO	82	12	W
150	HDPE	28	NO	94	16	W
175	HDPE	28	NO	98	16	W
250	HDPE	28	NO	110	20	W

WHITE SNAP ON / SCREW OFF POT

White Snap-On, Screw-Off HDPE Plastic Pots With Push on lid. Includes thread and tamper evident strip

Material: HDPE | Shape: Round | Tamper Evident: Yes | Child Resistant: No
 UN Approved: No | Induction Heat Seal: No

CAPACITY (ML)	MATERIAL	CAP SIZE (MM)	T/E	HEIGHT (MM)	WEIGHT (G)	COLOUR
40	HDPE	34	YES	48	8.2	W
75	HDPE	34	YES	75.5	12.7	W
275	HDPE	42	YES	114	28	W



WHITE SNAP SECURE HDPE PLASTIC POT

White Snap Secure HDPE Plastic Pots with White Snap-On Tamper Evident Lid

Material: HDPE | Shape: Round | Tamper Evident: Yes | Child Resistant: No UN
 Approved: No | Induction Heat Seal: No



CAPACITY (ML)	MATERIAL	CAP SIZE (MM)	T/E	HEIGHT (MM)	WEIGHT (G)	COLOUR
500	HDPE	82	YES	108	48	C
1000	HDPE	88	YES	182	72	C

WHITE SNAP SECURE PP PLASTIC POT

White Snap Secure PP Plastic Pots with White Snap-On Tamper Evident Lid

Material: Polypropylene | Shape: Round | Tamper Evident: Yes
 Child Resistant: No | UN Approved: No



CAPACITY (ML)	MATERIAL	DIAMETER (MM)	T/E	HEIGHT (MM)	WEIGHT (G)	COLOUR
45	PP	35	YES	52	7.5	W
100	PP	49	YES	58	13	W
130	PP	49	YES	75	17	W
170	PP	49	YES	100	21	W
265	PP	62	YES	90	25	W
330	PP	62	YES	113	29	W
450	PP	75	YES	106	38	W
650	PP	75	YES	150	60	W

WIDE MOUTH SCREW TOP PP PLASTIC POT

Wide Mouth Screw Top Pots in White or Natural Polypropylene Plastic

Material: PP | Shape: Round | Tamper Evident: No | Child Resistant: No
 UN Approved: No | Induction Heat Seal: No

CAPACITY (ML)	MATERIAL	DIAMETER (MM)	T/E	HEIGHT (MM)	WEIGHT (G)	COLOUR
150	PP	68.9	NO	70	16	W
250	PP	67	NO	70	17	W/N
275	PP	67	NO	70	21	W
500	PP	95	NO	100	33	W/N
800	PP	95	NO	100	42	W
1000	PP	107	NO	115	53	W
1250	PP	107	NO	115	67	W
1750	PP	123	NO	130	90	W



WIDE MOUTH SCREW TOP TAMPER EVIDENT POT

Wide Mouth Screw Top Tamper Evident Pots in White PP Plastic

Material: PP | Shape: Round | Tamper Evident: Yes | Child Resistant: No
 UN Approved: No | Induction Heat Seal: No



CAPACITY (ML)	MATERIAL	DIAMETER (MM)	T/E	HEIGHT (MM)	WEIGHT (G)	COLOUR
150	PP	63	YES	73	13	W
200	PP	72	YES	69	19	W
250	PP	80	YES	82	23	W
500	PP	95	YES	106	36	W
800	PP	95	YES	123	42	W

WHITE & CLEAR PP PLASTIC BUCKET

White & Clear PP Plastic Buckets with Tamper Evident Lid and Plastic Handle

Material: PP | Shape: Round | Tamper Evident: Yes
 Child Resistant: No | UN Approved: No



CAPACITY (ML)	MATERIAL	HEIGHT	T/E	TOP DIAMETER	BASE DIAMETER	COLOUR
500	PP	102	YES	100	86	W
1000	PP	131	YES	132	105	W
2500	PP	138	YES	200	170	W
2500	PP	138	YES	200	170	N
4000	PP	124	YES	225	198	W
5000	PP	194	YES	227	189	N
5000	PP	194	YES	227	189	W

ROUND WHITE PP PLASTIC BUCKET

Round White PP Plastic Buckets with Tamper Evident Lid and a choice of Metal (MH) or Plastic or Integral Handle (IH). [Heavyweight Indicated Below as HW]

Material: PP | Shape: Round | Tamper Evident: Yes | Child Resistant: No
 UN Approved: No | Induction Heat Seal: No

CAPACITY (ML)	MATERIAL	HEIGHT	T/E	TOP DIAMETER	BASE DIAMETER	COLOUR
8500	PP	221	YES	265	227	W
10000	PP	264	YES	265	225	W
10000	PP / MH	264	YES	265	225	W
12500	PP / MH	256	YES	291	250	N
12500	PP	294	YES	268	266	W
16000	PP / MH	292.5	YES	368	265	N
16000	PP	292.5	YES	318	265	W
16000	PP / HW	282	YES	293	266	W
18000	PP / MH	276	YES	284	276	W
20000	PP / MH	359	YES	326	265	W
20000	PP / HW	359	YES	326	265	W
25000	PP / MH	416	YES	328	274	W
30000	PP / IH	402	YES	387	315	W



25L WHITE UN APPROVED PLASTIC PAIL

White Round UN Approved PP Plastic Pail with a Blue Screw-On Tamper Evident Lid

Material: PP | Shape: Round | Tamper Evident: Yes | Child Resistant: No UN
 Approved: Yes - for solids



CAPACITY (L)	MATERIAL	HEIGHT	T/E	BODY DIAMETER	MIN. OPENING	COLOUR
25	PP	452	YES	338	295	WHITE / BLUE LID

30L UN APPROVED BLUE PP PLASTIC BUCKET

UN Approved Bucket in Blue PP Plastic with Lever Ring Closure & Metal (MH) or Side Handle (SH)

Material: PP | Shape: Round | Tamper Evident: No | Child Resistant: No
UN Approved: Yes - for solids



CAPACITY (ML)	MATERIAL	HEIGHT	T/E	TOP DIAMETER	BASE DIAMETER	COLOUR
30	PP / MH	388	NO	368	300	BLUE
30	PP / SH	388	NO	368	300	BLUE

6L OVAL WHITE PP PLASTIC BUCKET

Oval White PP Plastic Bucket with Metal Handle

Material: PP | Shape: Oval | Tamper Evident: Yes | Child Resistant: No
UN Approved: No | Induction Heat Seal: No

CAPACITY (ML)	MATERIAL	HEIGHT	T/E	TOP DIAMETER	BASE DIAMETER	COLOUR
6000	PP	186	YES	276.5 x 199	244 x 165	W



ROUND TRANSPARENT PP PLASTIC BUCKET

Transparent Round PP Plastic Buckets Tamper Evident

Material: PET | Shape: Round | Tamper Evident: Yes | Child Resistant: No UN Approved: No | Induction Heat Seal: No



CAPACITY (ML)	MATERIAL	HEIGHT	T/E	TOP DIAMETER	BASE DIAMETER	COLOUR
500	PP	102	YES	100	86	C
1000	PP	131	YES	132	105	C
2500	PP	138	YES	200	170	C
5000	PP	194	YES	227	189	C

LDPE PLASTIC BUCKET

LDPE Plastic Buckets moulded with an Internal Graduated Litre Scale and Plastic Coated Rustproof Steel Handle. Available with or without spout.

Material: LDPE | Shape: Round | Tamper Evident: No
Child Resistant: No | UN Approved: No



CAPACITY (L)	MATERIAL	HEIGHT	T/E	TOP DIAMETER	BASE DIAMETER	COLOUR
10	LDPE	300	NO	65	12	WHITE - WITH SPOUT
10	LDPE	279	NO	65	12	GREY
10	LDPE	279	NO	73	13	WHITE
15	LDPE	335	NO	105	17	WHITE - WITH SPOUT

33L WHITE RECTANGLE PP PLASTIC BUCKET

White Rectangle PP Plastic Bucket with integral handles. Tamper Evident.

Material: PP | Shape: Rectangle | Tamper Evident: Yes | Child Resistant: No
UN Approved: No | Induction Heat Seal: No

CAPACITY (L)	MATERIAL	HEIGHT	T/E	TOP DIAMETER	BASE DIAMETER	COLOUR
33	PP	34	YES	375 x 275	328 x 230	W



20L WHITE UN APPROVED HEAVY DUTY PLASTIC PAIL

White UN Approved Heavy Duty PP Plastic Pail with White Lid and Metal Handle.

Material: PP | Shape: Round | Tamper Evident: Yes | Child Resistant: No
UN Approved: Yes - for solids



CAPACITY (L)	MATERIAL	HEIGHT	T/E	BODY DIAMETER	WEIGHT (G)	COLOUR
20	PP	38	YES	312	276	W

BLUE UN APPROVED OPEN TOP HDPE PLASTIC DRUM

Blue UN Approved Open Top HDPE Plastic Drums with Black Lid & Lever Ring Closure

Material: HDPE | Shape: Round | Tamper Evident: No | Child Resistant: No
UN Approved: Yes - for solids



CAPACITY (L)	MATERIAL	HEIGHT	T/E	BODY DIAMETER	WEIGHT (KG)	COLOUR
30	HDPE	520	NO	312	1.35	BLUE
60	HDPE	625	NO	398	2.5	BLUE
120	HDPE	800	NO	496	4.5	BLUE
150	HDPE	965	NO	504	4.5	BLUE
220	HDPE	973	NO	590	7.5	BLUE

BLUE UN APPROVED TIGHTHEAD HDPE PLASTIC DRUM

Blue UN Approved Tighthead HDPE Plastic Drum with bungs

Material: HDPE | Shape: Round | Tamper Evident: No | Child Resistant: No
UN Approved: Yes | Induction Heat Seal: No

CAPACITY (L)	MATERIAL	HEIGHT	HANDLES	BODY DIAMETER	WEIGHT (KG)	COLOUR
60	HDPE	609	YES	399	2.6	BLUE
120	HDPE	730	NO	490	5.5	BLUE
220	HDPE	935	NO	581	8.5	BLUE



HEAVY DUTY DISPENSING PUMPS

Heavy Duty hand operated dispensing pumps for large capacity jerrycans and drums

Material: HDPE | Shape: Pumps | Tamper Evident: No | Child Resistant: No UN Approved: No | Induction Heat Seal: No



PUMP STYLE	PRODUCT FITS WITH	MAX DEPTH TO BOTTOM	WEIGHT	COLOUR
DIN61	15L + 20L JERRYCAN	420	400	W
DIN61 (DRUM)	25L + 30 JERRYCAN + 60L DRUM	770	635	W
HEAVY DUTY	120L + 220L DRUM	930	700	W

UN APPROVED SCREW TOP PLASTIC KEGS 7000 SERIES

UN Certified Screw Top HDPE Kegs, Heavy Duty with White Body & Red Lid

Material: HDPE | Shape: Round | Tamper Evident: Can be made so
 Child Resistant: No | UN Approved: Yes - for solids



CAPACITY (L)	MATERIAL	HEIGHT	T/E	BODY DIAMETER	HANDLES	COLOUR
3.6	HDPE	173	NO	198	NO	W / R
6.4	HDPE	265	NO	198	NO	W / R
10.4	HDPE	239	NO	274	NO	W / R
15	HDPE	328	NO	274	NO	W / R
20	HDPE	418	NO	274	NO	W / R
26	HDPE	426	NO	316	NO	W / R
41.5	HDPE	416	NO	410	YES	W / R
54	HDPE	518	NO	410	YES	W / R
68	HDPE	632	NO	410	YES	W / R

UN APPROVED SCREW TOP PLASTIC KEGS 6900 SERIES

UN Certified Screw Top HDPE Kegs, Heavy Duty with White Body & Red Lid

Material: HDPE | Shape: Round | Tamper Evident: Can be made so | Child Resistant: No | UN Approved: Yes - for solids

CAPACITY (L)	MATERIAL	HEIGHT	T/E	BODY DIAMETER	HANDLES	COLOUR
17	HDPE	250	NO	338	NO	W / R
26	HDPE	356	NO	338	YES	W / R
34	HDPE	447	NO	338	YES	W / R



20 LITRE FLUORINATED PLASTIC STACKABLE JERRYCAN

Natural Rectangle Fluorinated Stackable Jerrycan in HDPE Plastic.

Material: HDPE | Shape: Rectangle | Tamper Evident: Yes
 Child Resistant: No | UN Approved: Yes - for liquids | Barrier Bottle - Yes



CAPACITY (L)	MATERIAL	CAP SIZE (MM)	T/E	HEIGHT (MM)	WEIGHT (G)	COLOUR
20	HDPE	60	YES	400	1200	N

25 LITRE NATURAL UN Y1.9 JERRYCAN 1050GM – DIN60

Natural UN Approved (Y1.9) Rectangle HDPE Jerrycan.

Material: HDPE | Shape: Rectangle | Tamper Evident: Yes | Child Resistant: No
 UN Approved: Yes - for liquids | Barrier Bottle: No

CAPACITY (L)	MATERIAL	CAP SIZE (MM)	T/E	HEIGHT (MM)	WEIGHT (G)	COLOUR
25	HDPE	60	YES	468	935	N



PLASTIC ECONOMY JERRYCAN

HDPE Plastic Economy Jerrycans in Varied Colours. Tamper Evident and Child Resistant

Material: HDPE | Shape: Varied | Tamper Evident: Yes | Child Resistant: Yes UN
 Approved: No | Induction Heat Seal: No



CAPACITY (ML)	MATERIAL	CAP SIZE (MM)	T/E	HEIGHT (MM)	WEIGHT (G)	COLOUR
1000	HDPE	38	YES	165	44	NAT, WH, BLACK
2000	HDPE	38	YES	207	60	NAT
2500	HDPE	38	YES	223	80	NAT, BLACK
4000	HDPE	38	YES	240	125	NAT, WH
1 GAL	HDPE	38	YES	261	125	NAT
5000	HDPE	38	YES	283.5	130 / 135	NAT, WH, BLACK, ORANGE

PLASTIC STACKABLE JERRYCAN

HDPE Plastic Rectangle Stackable UN Approved Jerrycan in a Range of Colours and Sizes.

Material: HDPE | Shape: Rectangle | Tamper Evident: Yes
 Child Resistant: No | UN Approved: Yes / No



CAPACITY (L)	UN APPROVED	MATERIAL	CAP SIZE (MM)	T/E	HEIGHT (MM)	WEIGHT (G)	COLOUR
2	NO	HDPE	45	YES	65	12	N, W, B
2.5	YES	HDPE	45	YES	65	12	W, N
3	YES	HDPE	45	YES	73	13	W, N
5	YES	HDPE	45 / 50	YES	105	17	N, BLUE, W
6	NO	HDPE	45	YES	108	18	N
8	NO	HDPE	45	YES	110	18	N
10	YES	HDPE	50 / 55	YES	65	12	N, BLUE, W
12.5	YES	HDPE	55	YES	65	12	N
15	YES	HDPE	60	YES	73	13	N
20	YES	HDPE	60	YES	105	17	N, BLUE, W
25	YES	HDPE	60 / 61	YES	108	18	N, BLUE, BL
30	YES	HDPE	60	YES	110	18	N, BLUE

4 LITRE PLASTIC JERRYCAN

Natural 4 Litre Side Handle HDPE Plastic Jerrycan. Tap, Pump and Screw Caps Available

Material: HDPE | Shape: Side Handle | Tamper Evident: Yes | Child Resistant: No UN Approved: No | Induction Heat Seal: No

CAPACITY (ML)	MATERIAL	CAP SIZE (MM)	T/E	HEIGHT (MM)	WEIGHT (G)	COLOUR
4000	HDPE	38	YES	304	110	N
4000	HDPE	38	YES	304	110	R



25 LITRE NATURAL UN Y1.6 JERRICAN - DIN60 - SQUARE ROUND

25 Litre Natural UN approved (Y1.6) Jerrycan. DIN 60 in a square round shape

Material: HDPE | Shape: Rectangle | Tamper Evident: Yes
 Child Resistant: No | UN Approved: Yes - for liquids | Barrier Bottle - Yes



CAPACITY (L)	MATERIAL	CAP SIZE (MM)	T/E	HEIGHT (MM)	WEIGHT (G)	COLOUR
20	HDPE	60	YES	400	1200	N

PP PLASTIC BEAKER

PP Plastic Beaker with Printed Blue Scale

Material: PP | Shape: Round | Tamper Evident: Yes | Child Resistant: No
UN Approved: No | Induction Heat Seal: No



CAPACITY (ML)	MATERIAL	GRADUATION SUB DIVISION (ML)	HEIGHT (MM)
50	PP	10	60
100	PP	20	70
250	PP	50	84
500	PP	50	122
1000	PP	100	149

PP PLASTIC FUNNEL

PP Plastic Rapid Flow Funnel in various sizes

Material: PP | Shape: Conical | Tamper Evident: Yes | Child Resistant: No
UN Approved: No | Induction Heat Seal: No

CAPACITY (ML)	MATERIAL	STEM O.D (MM)	HEIGHT (MM)
30	PP	4	47
40	PP	4	65
50	PP	7	85
75	PP	10	110
100	PP	8	155
120	PP	11	180
150	PP	15	220
200	PP	22	200
250	PP	30	260



STACKABLE PP PLASTIC JUGS

Transparent Stackable PP Plastic Jugs with a Printed Scale

Material: PP | Shape: Round | Tamper Evident: N/A | Child Resistant: No
UN Approved: No | Induction Heat Seal: No



CAPACITY (ML)	MATERIAL	GRADUATION SUB DIVISION (ML)	HEIGHT (MM)
500	PP	10	140
1000	PP	10	167
2000	PP	20	212
3000	PP	50	242

PP PLASTIC MEASURING CYLINDER - RAISE BLUE SCALE

Tall Natural PP Plastic Measuring Cylinder with raised blue scale and Hexagonal Base. Ring marks at the primary scale points. Tolerances Class B according to Din 12681 / ISO 6706.



CAPACITY (ML)	GRADUATION SUB DIVISION (ML)	DIAMETER (MM)	HEIGHT (MM)
10	0.2	16	140
25	0.5	21	169
50	1	28	199
100	1	34	260
250	2	47	315
500	5	61	350
1000	10	76	415
2000	20	97	482

PP PLASTIC MEASURING CYLINDER - RAISED SCALE

Tall Natural PP Plastic Measuring Cylinder PP with raised scale and Hexagonal Base. Ring marks at the primary scale points. Tolerances class B according to Din 12681 / ISO 6706.

CAPACITY (ML)	GRADUATION SUB DIVISION (ML)	DIAMETER (MM)	HEIGHT (MM)
10	0.2	16	140
25	0.5	21	169
50	1	28	199
100	1	34	260
250	2	47	315
500	5	61	350
1000	10	76	415
2000	20	97	482



1 LITRE SQUARE PET BOTTLE WITH FLAPPER CAP

Clear PET Square Bottle with Finger Grips and a 63mm Flapper Cap and Seal

Material: PET | Shape: Square | Tamper Evident: No
Child Resistant: No | UN Approved: No



CAPACITY (ML)	MATERIAL	HEIGHT	T/E	CAP SIZE (MM)	WEIGHT (G)	COLOUR
1000	PET	180	YES	63	43	C

PET PLASTIC TRIGGER BOTTLE

Clear Plastic PET Plastic Trigger Bottles with Pistol Grip

Material: PET | Shape: Trigger | Tamper Evident: No | Child Resistant: No
UN Approved: No | Induction Heat Seal: No

CAPACITY (ML)	MATERIAL	HEIGHT	T/E	BODY CROSS	WEIGHT (G)	COLOUR
500	PET	211	NO	103 x 57	36	C



WHITE OR NATURAL HDPE PLASTIC TRIGGER BOTTLE

White or Natural HDPE Plastic Trigger Bottle with Pistol Grip

Material: HDPE | Shape: Trigger | Tamper Evident: No | Child Resistant: No
UN Approved: No



CAPACITY (ML)	MATERIAL	HEIGHT	CAP SIZE	CROSS SECTION	WEIGHT (KG)	COLOUR
500	HDPE	239	28	102 x 47	40	N, W
750	HDPE	254	28	106 x 58	50	N, W
1000	HDPE	262	28	109 x 59	60	N, W

TWIN NECK CHILD RESISTANT HDPE PLASTIC DOSING BOTTLES

Twin Neck Child Resistant HDPE Plastic Dosing Bottles.

Material: HDPE | Shape: Dosing | Tamper Evident: No
Child Resistant: Yes | UN Approved: No



CAPACITY (ML)	MATERIAL	HEIGHT	CAP SIZE	BODY CROSS SECTION	CHAMBER	COLOUR
100	HDPE	114	20	74 x 33.6	5ML	N
250	HDPE	160	22	93.5 x 42	10ML	N
500	HDPE	205	28	110 x 50.3	25ML	N
1000	HDPE	235	28	134 x 65	25ML	N

WHITE ROUND PP PLASTIC MASTIC CARTRIDGE

White Round PP Plastic Mastic Cartridge with Piston and Nozzle

Material: PP | Shape: Round | Tamper Evident: Yes | Child Resistant: No
UN Approved: No | Induction Heat Seal: No

CAPACITY (ML)	MATERIAL	HEIGHT	T/E	BODY DIAMETER (MM)	COLOUR
310	PP	235	NO	338	WHITE
400	PP	256	NO	338	WHITE



PETG TOTTLE COMPLETE WITH FLIP TOP CAP & METAL CLIP

PETG Tottle Complete with Flip Top Cap & Metal Clip Metal Clip in Silver or Red

Material: PETG | Shape: Hand Sanitiser| Tamper Evident: No
Child Resistant: No | UN Approved: No



CAPACITY (ML)	MATERIAL	HEIGHT	CAP SIZE	BODY CROSS SECTION	COLOUR
60	PETG	78	20	74 x 33.6	N

CONTACT

To test compatibility of our products with your contents we always recommend a sample order.

To arrange this, please contact us with details of the item of interest (name, size and colour, if applicable) along with the delivery address. Please note larger capacity items will be processed as paid sample orders.

If you are already familiar with our products and are interested in larger quantity pricing - please contact our team to discuss location, frequency and your preferred quantity.

SALES@CJK.CO.UK
01663 750 222



Fast lead
time



Quality
Products



Expert
Team



Reliable
Service



Wide Stock
Range

LARGE QUANTITIES FROM STOCK | WORLDWIDE SHIPPING | UK DISTRIBUTOR

01663 750 222 | CJK.CO.UK